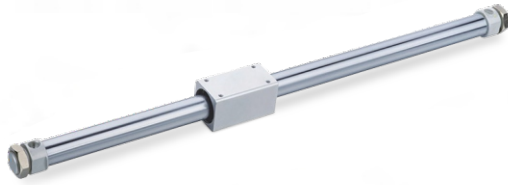


CY3B Series Rodless Cylinder



CY3B 20 × 400

Ordering Code

CY3	B	25	×	50
Series code CY3: Standard	Piping Form B: Normal Type	Bore Size 15mm~40mm		Stroke See Stroke List.

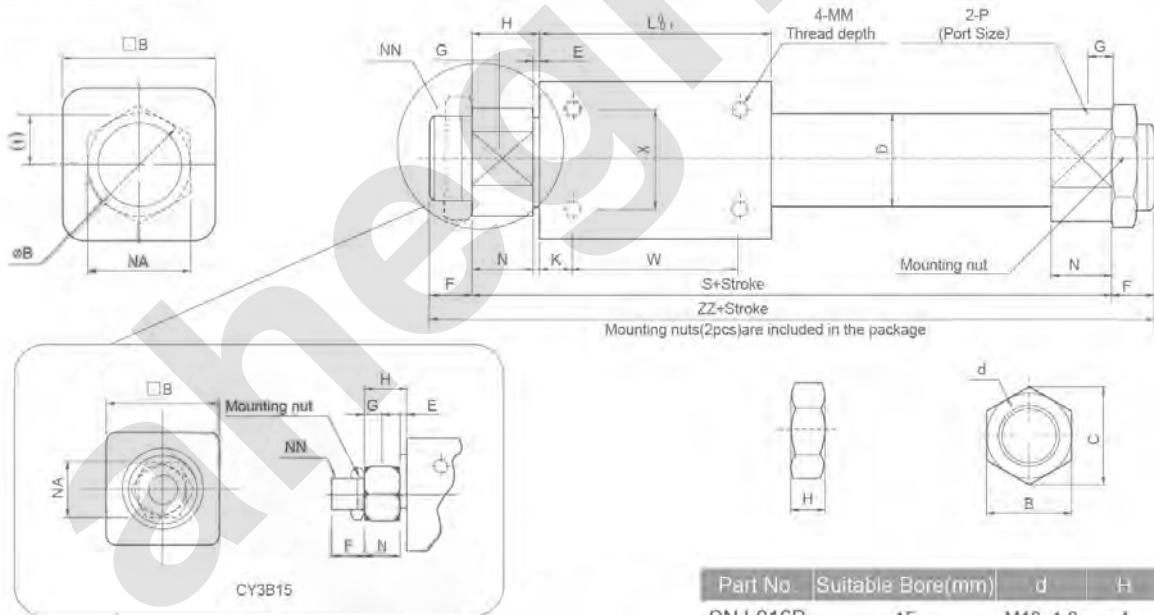
Specification

Bore(mm)	15	20	25	32	40
Working Medium	Air(to be filtered by 40µm filter element)				
Max.operating Pressure	0.7Mpa				
Min.operating Pressure	0.16Mpa	0.15Mpa	0.14Mpa	0.12Mpa	
Environment And Fluid Temperature	-10~60°C (No freezing)				
Piston Speed Mm/S	50~400				
Cushion Type	Rubber cushion on both ends				
Stroke Tolerance(mm)	0~250 ^{+1.0} , 251~1000 ^{+1.4} , 1001~ ^{+1.8}				
Magnet Holding Force N	137	231	363	588	922
Size Port	M5×0.8		Rc1/8		

Stroke

Bore (mm)	Standard stroke(mm)	Max.stroke(mm)	
		Without switch	With switch
15	50,100,150,200,250,300,350,400,450,500	1000	750
20		1500	1000
25	100,150,200,250,300,350,400,450,500,600,700,800		1200
32		3000	
40	100,150,200,250,300,350,400,450,500,600,700,800,900,1000		1500

Overall Dimensions



Part No.	Suitable Bore(mm)	d	H	B	C
SNJ-016B	15	M10×1.0	4	14	16.2
SN-020B	20	M20×1.5	8	26	30
SN-032B	25,32	M26×1.5	8	32	37
SN-040B	40	M32×2.0	10	41	47.3

Dimension Sheet

Bore(mm)	B	D	E	F	G	H	I	J	K	L	MM	N	NA	NN	R	S	W	X	ZZ
15	35	16.6	3	10	5.5	13	-	6	11	57	M4×0.7	11	17	M10×1	-	83	35	19	103
20	36	21.6	2	13	7.5	20	12	6	8	66	M4×0.7	18	24	M20×1.5	28	106	50	25	132
25	46	26.4	2	13	7.5	20.5	15	8	10	70	M5×0.8	18.5	30	M26×1.5	34	111	50	30	137
32	60	33.6	2	16	8	22	18	8	15	80	M6×1	20	36	M26×1.5	40	124	50	40	156
40	70	41.6	3	16	11	29	23	10	16	92	M6×1	26	46	M32×2	50	150	60	40	182